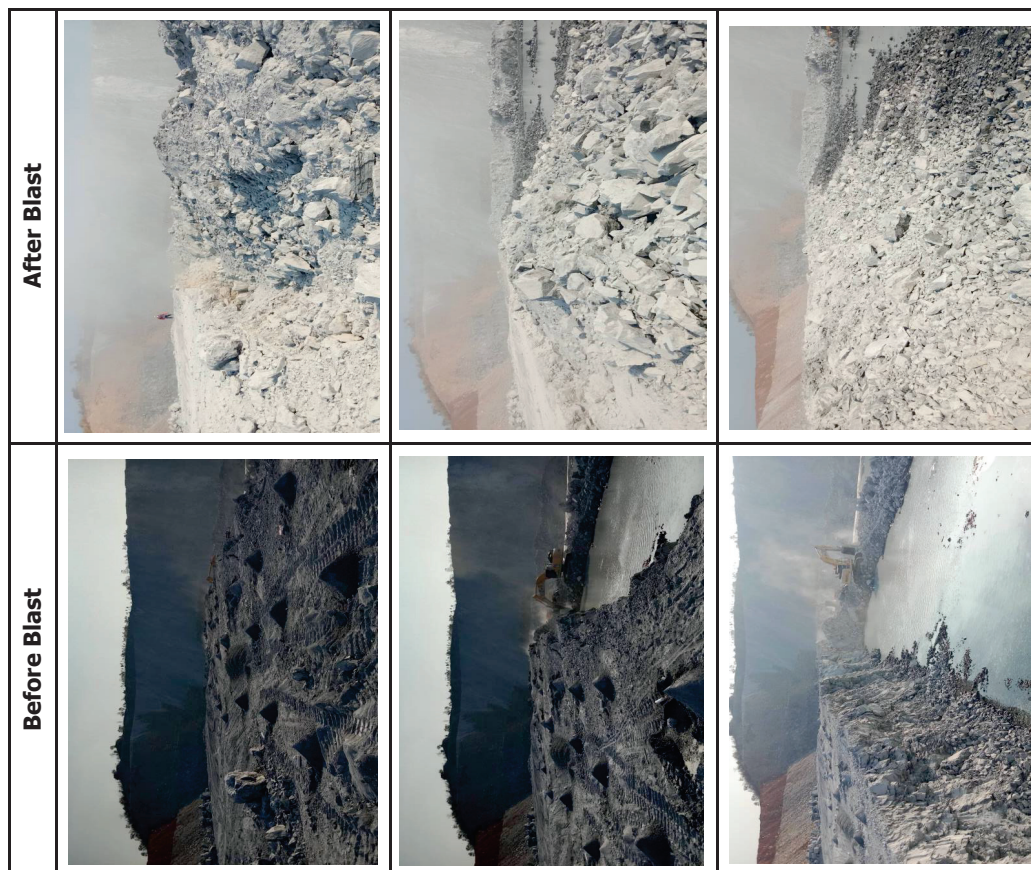


Please contact us:

TEKPV COMPANY LIMITED
3/3 K, Klongkum Road, Klongkum, Bangkok, Thailand 10720
Tel.: +662 885 1500
Fax: +662 88503091
E-mail: sen@pvexplosive.com

Tenaga Kimia Sdn. Bhd
Jalan SS 22/21, Damansara Jaya,
47600 Petaling Jaya,
Selangor, Malaysia
Tel.: +603 7729 7464
Fax: +603 7729 8383
Web: www.tenagakimia.com
E-mail: kkkwa@tenagakimia.com

ผู้จัดการ



[illegible][illegible]

No.	INK ID	Design	Actual Hole Depth	Weight Weight	First Casting (Surface graining)	Start Time	Stripping (after graining)	Stripped Time	Design Casting Length	Actual Casting Length	Cap Time	Gassing Time	Adjuster	Final Height	Comment
		dimension	mm	mm	mm	mm	mm	mm	mm	mm	mm	mm	mm	mm	
1	A1	10.8	10.8	73	73	3.1	3.1	3.1	0.8	0.8	1	15	10	73	
2	A2	10.8	10.8	73	73	3.1	3.1	3.1	0.8	0.8	1	15	10	73	
3	A3	10.8	10.8	73	73	3.1	3.1	3.1	0.8	0.8	1	15	10	73	
4	A4	10.8	10.8	73	73	3.1	3.1	3.1	0.8	0.8	1	15	10	73	
5	A5	10.8	10.8	73	73	3.1	3.1	3.1	0.8	0.8	1	15	10	73	
6	A6	10.8	10.8	73	73	3.1	3.1	3.1	0.8	0.8	1	15	10	73	
7	A7	10.8	10.8	73	73	3.1	3.1	3.1	0.8	0.8	1	15	10	73	
8	A8	10.8	10.8	73	73	3.1	3.1	3.1	0.8	0.8	1	15	10	73	
9	A9	10.8	10.8	73	73	3.1	3.1	3.1	0.8	0.8	1	15	10	73	
10	A10	10.8	10.8	73	73	3.1	3.1	3.1	0.8	0.8	1	15	10	73	
11	A11	10.8	10.8	73	73	3.1	3.1	3.1	0.8	0.8	1	15	10	73	
12	A12	10.8	10.8	73	73	3.1	3.1	3.1	0.8	0.8	1	15	10	73	
13	A13	10.8	10.8	73	73	3.1	3.1	3.1	0.8	0.8	1	15	10	73	
14	A14	10.8	10.8	73	73	3.1	3.1	3.1	0.8	0.8	1	15	10	73	
15	A15	10.8	10.8	73	73	3.1	3.1	3.1	0.8	0.8	1	15	10	73	
16	A16	10.8	10.8	73	73	3.1	3.1	3.1	0.8	0.8	1	15	10	73	
17	A17	10.8	10.8	73	73	3.1	3.1	3.1	0.8	0.8	1	15	10	73	
18	A18	10.8	10.8	73	73	3.1	3.1	3.1	0.8	0.8	1	15	10	73	
19	A19	10.8	10.8	73	73	3.1	3.1	3.1	0.8	0.8	1	15	10	73	
20	A20	10.8	10.8	73	73	3.1	3.1	3.1	0.8	0.8	1	15	10	73	
21	A21	10.8	10.8	73	73	3.1	3.1	3.1	0.8	0.8	1	15	10	73	
22	A22	10.8	10.8	73	73	3.1	3.1	3.1	0.8	0.8	1	15	10	73	
23	A23	10.8	10.8	73	73	3.1	3.1	3.1	0.8	0.8	1	15	10	73	
24	A24	10.8	10.8	73	73	3.1	3.1	3.1	0.8	0.8	1	15	10	73	
25	A25	10.8	10.8	73	73	3.1	3.1	3.1	0.8	0.8	1	15	10	73	
26	A26	10.8	10.8	73	73	3.1	3.1	3.1	0.8	0.8	1	15	10	73	
27	A27	10.8	10.8	73	73	3.1	3.1	3.1	0.8	0.8	1	15	10	73	
28	A28	10.8	10.8	73	73	3.1	3.1	3.1	0.8	0.8	1	15	10	73	
29	A29	10.8	10.8	73	73	3.1	3.1	3.1	0.8	0.8	1	15	10	73	
30	A30	10.8	10.8	73	73	3.1	3.1	3.1	0.8	0.8	1	15	10	73	
31	A31	10.8	10.8	73	73	3.1	3.1	3.1	0.8	0.8	1	15	10	73	
32	A32	10.8	10.8	73	73	3.1	3.1	3.1	0.8	0.8	1	15	10	73	
33	A33	10.8	10.8	73	73	3.1	3.1	3.1	0.8	0.8	1	15	10	73	
34	A34	10.8	10.8	73	73	3.1	3.1	3.1	0.8	0.8	1	15	10	73	
35	A35	10.8	10.8	73	73	3.1	3.1	3.1	0.8	0.8	1	15	10	73	

2025-01-01 10:00:00

No.	Hole ID	Design Depth	Actual Depth	Design Weight	Total Actual Weight	Eliminating (Bales primary)	Start Time	Shooting (Latter primary)	Shooting Time	Design Gassing Length	Actual Gassing Length	Cap No.	Gassing Time	Adjustment	Final Weight	Comment
		mm	mm	mm	mm	mm	mm	mm	mm	mm	mm	mm	mm	mm	mm	mm
1	10.8	10.8	10.8	73	73	3.3	10.0	3.3	10.0	0.8	0.8	3	16	—	16	
2	10.8	10.8	10.8	73	73	3.3	10.0	3.3	10.0	0.8	0.8	3	16	—	16	
3	10.8	10.8	10.8	73	73	3.3	10.0	3.3	10.0	0.8	0.8	3	16	—	16	
4	10.8	10.8	10.8	73	73	3.3	10.0	3.3	10.0	0.8	0.8	3	16	—	16	
5	10.8	10.8	10.8	73	73	3.3	10.0	3.3	10.0	0.8	0.8	3	16	—	16	
6	10.8	10.8	10.8	73	73	3.3	10.0	3.3	10.0	0.8	0.8	3	16	—	16	
7	10.8	10.8	10.8	73	73	3.3	10.0	3.3	10.0	0.8	0.8	3	16	—	16	
8	10.8	10.8	10.8	73	73	3.3	10.0	3.3	10.0	0.8	0.8	3	16	—	16	
9	10.8	10.8	10.8	73	73	3.3	10.0	3.3	10.0	0.8	0.8	3	16	—	16	
10	10.8	10.8	10.8	73	73	3.3	10.0	3.3	10.0	0.8	0.8	3	16	—	16	
11	10.8	10.8	10.8	73	73	3.3	10.0	3.3	10.0	0.8	0.8	3	16	—	16	
12	10.8	10.8	10.8	73	73	3.3	10.0	3.3	10.0	0.8	0.8	3	16	—	16	
13	10.8	10.8	10.8	73	73	3.3	10.0	3.3	10.0	0.8	0.8	3	16	—	16	
14	10.8	10.8	10.8	73	73	3.3	10.0	3.3	10.0	0.8	0.8	3	16	—	16	
15	10.8	10.8	10.8	73	73	3.3	10.0	3.3	10.0	0.8	0.8	3	16	—	16	
16	10.8	10.8	10.8	73	73	3.3	10.0	3.3	10.0	0.8	0.8	3	16	—	16	
17	10.8	10.8	10.8	73	73	3.3	10.0	3.3	10.0	0.8	0.8	3	16	—	16	
18	10.8	10.8	10.8	73	73	3.3	10.0	3.3	10.0	0.8	0.8	3	16	—	16	
19	10.8	10.8	10.8	73	73	3.3	10.0	3.3	10.0	0.8	0.8	3	16	—	16	
20	10.8	10.8	10.8	73	73	3.3	10.0	3.3	10.0	0.8	0.8	3	16	—	16	
21	10.8	10.8	10.8	73	73	3.3	10.0	3.3	10.0	0.8	0.8	3	16	—	16	
22	10.8	10.8	10.8	73	73	3.3	10.0	3.3	10.0	0.8	0.8	3	16	—	16	
23	10.8	10.8	10.8	73	73	3.3	10.0	3.3	10.0	0.8	0.8	3	16	—	16	
24	10.8	10.8	10.8	73	73	3.3	10.0	3.3	10.0	0.8	0.8	3	16	—	16	
25	10.8	10.8	10.8	73	73	3.3	10.0	3.3	10.0	0.8	0.8	3	16	—	16	
26	10.8	10.8	10.8	73	73	3.3	10.0	3.3	10.0	0.8	0.8	3	16	—	16	

Chemical shift

Checked by _____

1

1

๒๕๖๓
 ๒๕๖๓
 ๒๕๖๓